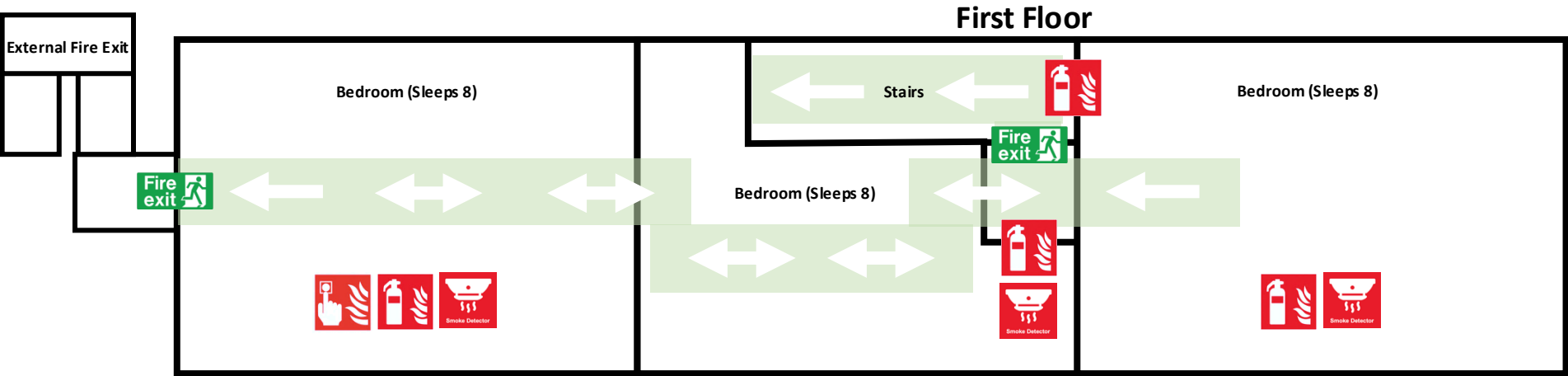
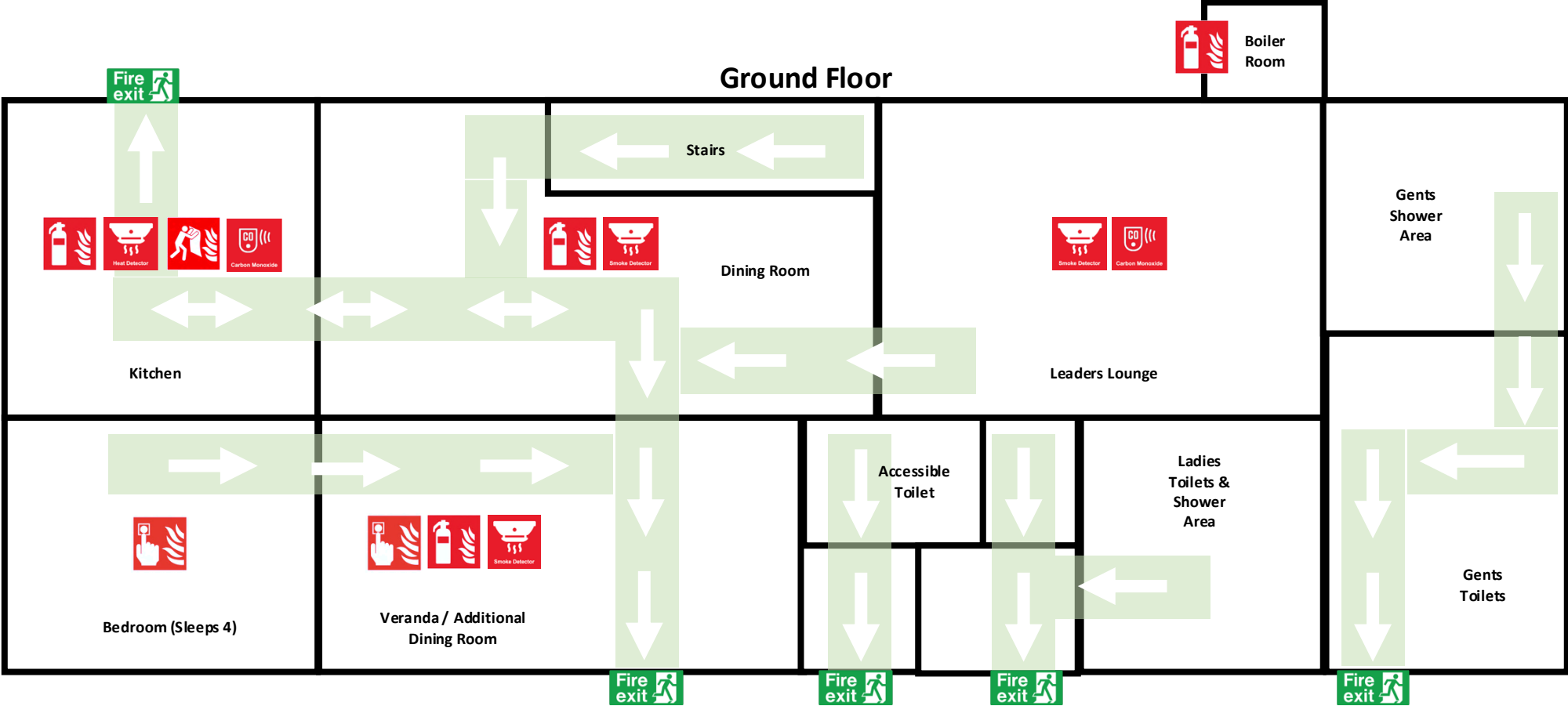


Golf House Layout and Fire Plan



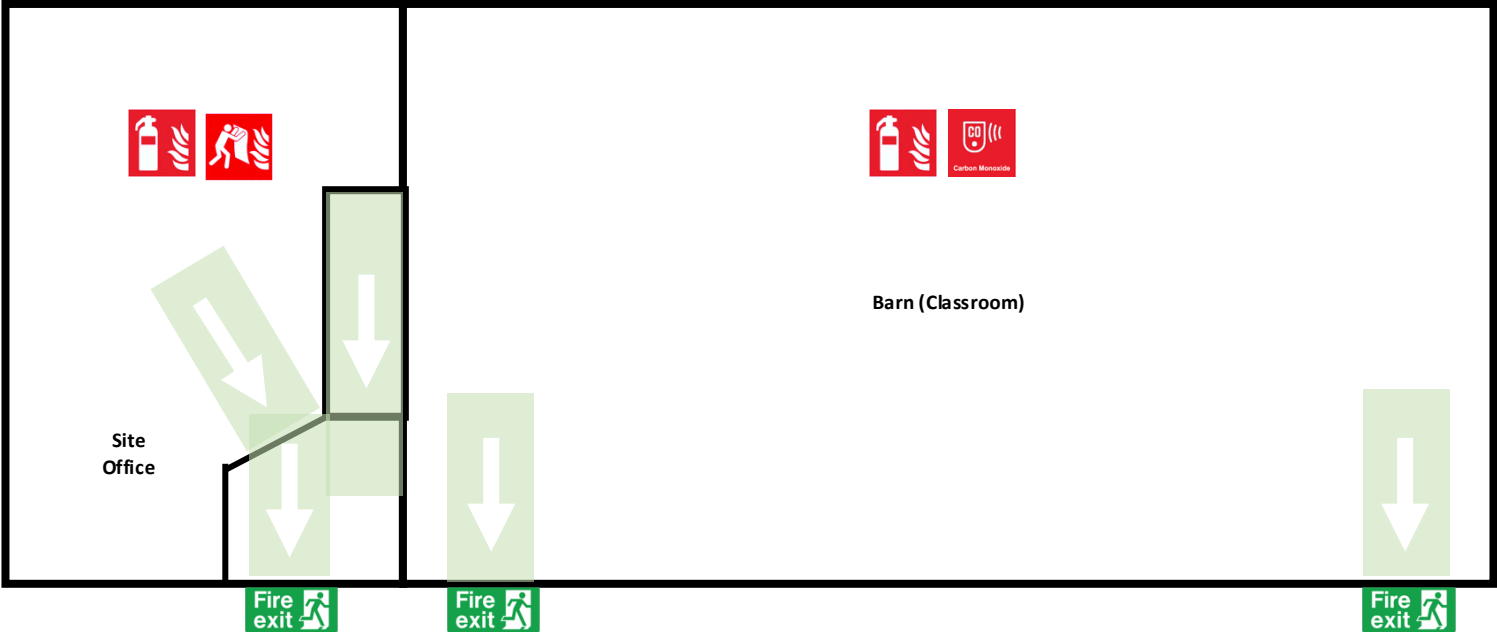
Legend

- Manual Call Point
- Fire Extinguisher
- Fire Blanket
- Smoke Detector
- Heat Detector
- Carbon Monoxide Alarm



The Wardens Den and Barn (Classroom) Layout and Fire Plan

Ground Floor



First Floor

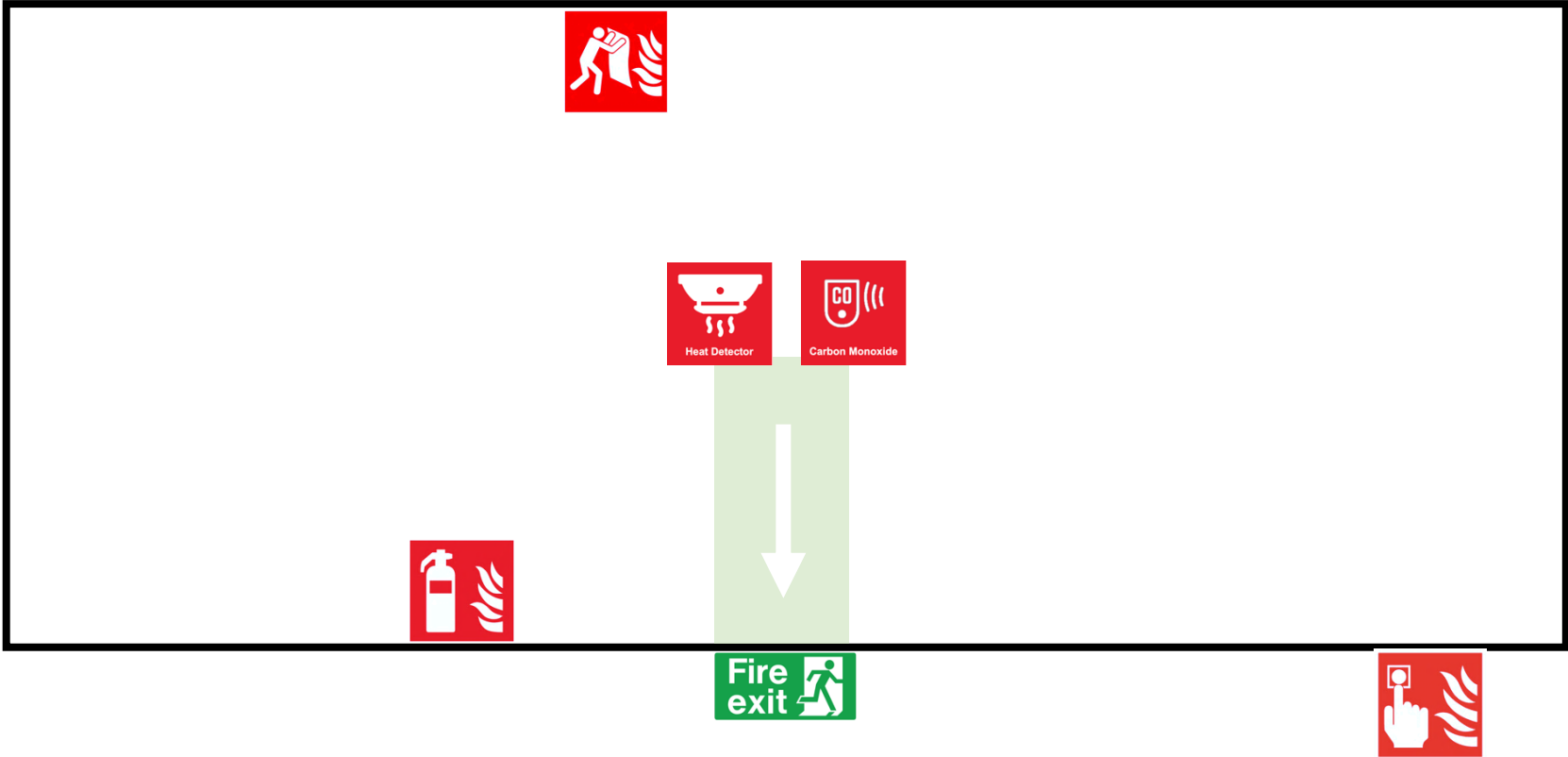


Legend




-  Manual Call Point
-  Fire Extinguisher
-  Fire Blanket
-  Smoke Detector
-  Heat Detector
-  Carbon Monoxide Alarm



The Field Kitchen Layout and Fire Plan



Legend

	Manual Call Point
	Fire Extinguisher
	Fire Blanket
	Heat Detector
	Carbon Monoxide Alarm



1. **If the Fire Alarm sounds – you must evacuate any buildings immediately!** Directing everyone to the assembly point at the Flagpole on the main field.
2. **Call 999 and ask for the Fire service.** Please liaise with the Duty Warden. There is a landline telephone in the Wardens Den. You will also be able to make mobile telephone calls from the Flagpole.
3. **If the Fire Alarm has been set off by accident or there is an error**, please follow this procedure:
 - Liaise with the Duty Warden
 - They will:
 - Firstly, gently press 'Silence Alarm' on the Fire Alarm Control Panel
 - Secondly gently press 'Reset'
 - Finally, gently press 'Alt' followed by 514, this will reset the alarm.
 - **Please note:** the Golf House Fire Alarm Control Panel has soft touch button that only need pressing gently. If you press them firmly it is likely to damage the touch buttons.



In case of an emergency

1. Dial 999 or 111 and ask for the relevant emergency service you require.
2. Please be aware that there is a Defibrillator and Bleed Kit situated outside the Barn next to the Wardens Den (this is in an unlocked cabinet). There is also a further Bleed Kit situated on the outside of the Lakeside Activity Building.
3. If you require urgent emergency care but can make your own way to the hospital. The nearest hospitals are as follows:

New Cross Hospital (24/7 Accident & Emergency)
Wolverhampton Road
Wolverhampton
WV10 0QP
01902 307999

The Princess Royal Hospital (9am-9pm Urgent Treatment Centre)
Apley Castle
Apley
TF1 6TF
01952 641222

Site address:

Patshull Activity Centre
High Park
Off Patshull Lane
Near Albrighton
South Staffordshire
WV7 3BB
01902 372353 (Telephone number in Wardens Den)

What3words (Site address)

Adjust.Invite.Bonfires

What3words (Main gate)

Classed.Camp.Mango

*Remember to provide the gate code to any emergency services or
position a leader on the gate!*



PATSHULL
ACTIVITY CENTRE

Hawkins Drive, Bridgtown, Cannock, WS11 0XT	<div><div>DIAMOND FIRE & SECURITY</div></div>	Tel: 01902 722721 Head Office: 03301 239002 sales@diamondfire.co.uk www.diamondfire.co.uk		
<div>CERTIFICATE of MAINTENANCE FIRE FIGHTING EQUIPMENT</div>				
THIS CERTIFICATE CONFIRMS THAT DIAMOND FIRE & SECURITY LTD HAVE COMPLETED THE ANNUAL SERVICE OF YOUR FIRE FIGHTING EQUIPMENT AS LISTED BELOW TO THE STANDARD 5306 PART 3 AND 8				
Engineer:	Glyn North	Responsible Person		
<div><div>Invoice No. 45832</div><div>Customer No. 21621</div><div>Customer Name: Patshull Scout Club</div><div>Address: The crown estate, off patshull lane, wed underfield, Altringham, Wolverhampton, Wolverhampton, United Kingdom</div><div>Postcode: WV7 3BB</div></div> <div><div>Certificate Expires on 01 October 2024</div><div>www.patshull.org.uk/user-information</div></div>				
	WATER	FOAM	POWDER	CO2
QTY	ONE	NINE	TWO	ONE
	WET CHEMICAL	FIRE BLANKETS	HOSES	SCREAMER ALARMS
QTY	NONE	THREE	NONE	NONE
Routine inspection by RESPONSIBLE PERSON.				
The RESPONSIBLE PERSON should carry out visual inspections on all extinguishers regularly. The visual inspections should be carried out at least monthly. When circumstances require, inspections should be carried out more frequently. When carrying out these visual inspections, it should be ensured that: A. Each extinguisher is correctly located in the designated place; B. Each extinguisher is unobstructed and visible; C. The operating instructions of each extinguisher are clean and legible and face outwards; D. Each extinguisher has not been operated and is not obviously damaged or has any missing parts; E. The reading of any pressure gauge or indicator fitted to an extinguisher is within operational and safety limits; F. The seals and tamper indicators of each extinguisher are not broken or missing. The responsible person should record the results of these visual inspections and arrange for corrective action, where necessary, by a competent person. In the event of doubt, the responsible person should arrange for a competent person to examine the extinguisher.				
Trading name: Diamond Fire and Security. Registered name: Diamond Fire Extinguishers Ltd Registered in England & Wales 3882283 QF/9.1				
QS/COM/002				
<div><div></div></div>				

Fire Fighting Equipment inspected every 12 months



Fire Assembly Point



- Out of bounds for unaccompanied young people (defined by stream/edge of lake)
- Out of bounds for everyone

Key things to remember!

- Please ensure you check-in with the Duty Warden on arrival
- In addition to the areas you hire, Visitors are required to help maintain cleanliness of toilets throughout your stay, the Duty Warden will agree a cleaning schedule with you
- This is a NO SMOKING site!
- Dogs are NOT permitted on site!
- Please familiarise yourself to the site boundary and adhere to them.
- Please ensure that young people are supervised whilst utilising any swings and/or play equipment
- Please ensure that young people are supervised whilst playing in the stream and we ask that any debris placed in the stream is removed afterwards

